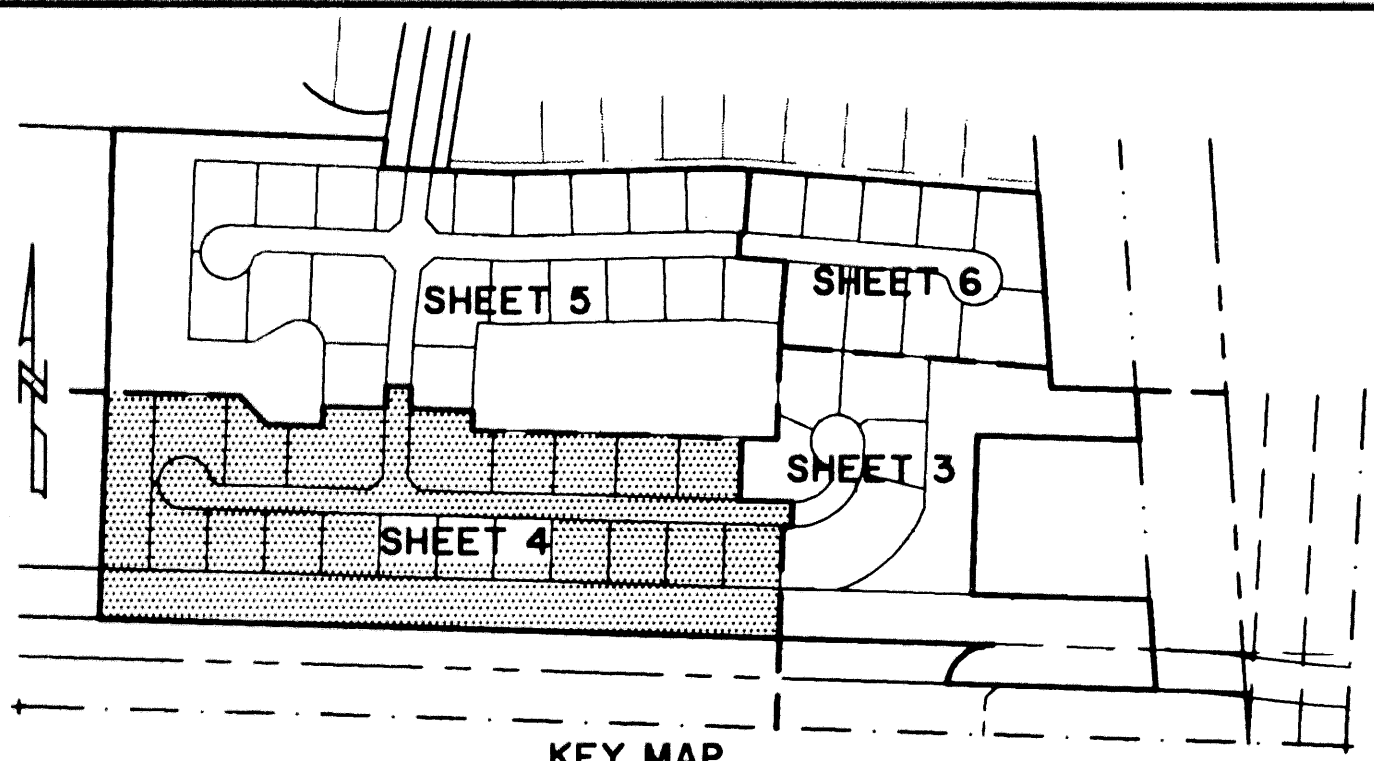
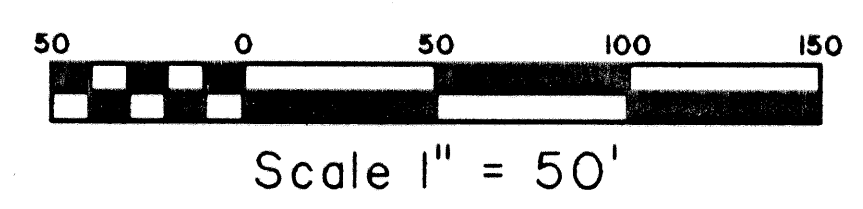


ISLES AT WELLINGTON PLAT VIII

A PORTION OF THE ORANGE POINT PLANNED UNIT DEVELOPMENT
LYING IN SECTION 26, TOWNSHIP 44 SOUTH, RANGE 41 EAST,
VILLAGE OF WELLINGTON, PALM BEACH COUNTY, FLORIDA.
SHEET 4 OF 6 JANUARY, 2002



STATE OF FLORIDA SS
COUNTY OF PALM BEACH
THIS PLAT WAS FILED FOR RECORD AT _____
M. THIS DAY OF _____ 2002
AND DULY RECORDED IN PLAT BOOK NO. _____
ON PAGE _____
DOROTHY H. WILKEN,
CLERK OF THE CIRCUIT COURT
BY _____ D.C.

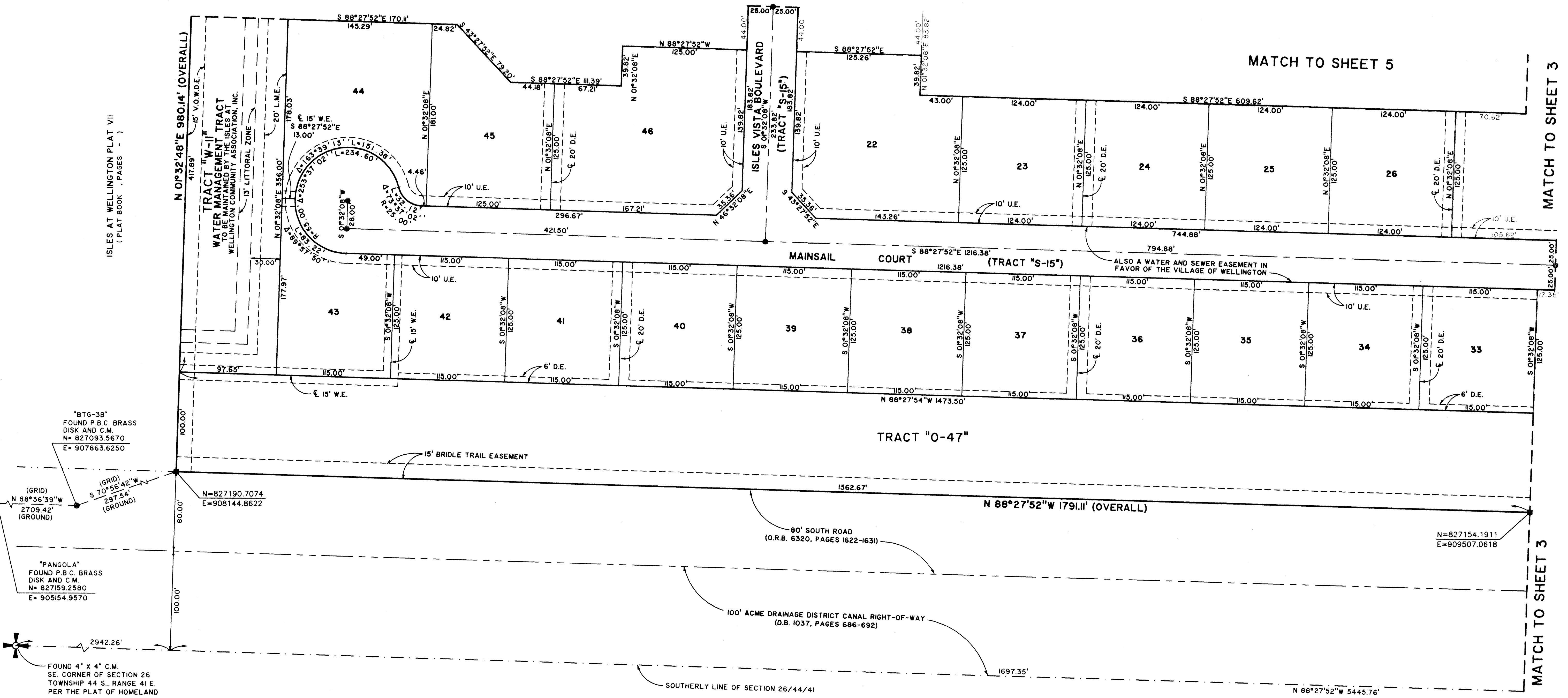


MATCH TO SHEET 5

MATCH TO SHEET 5

MATCH TO SHEET 5

MATCH TO SHEET 3



BTG-38
FOUND P.B.C. BRASS
DISK AND C.M.
N= 827093.5670
E= 907863.6250

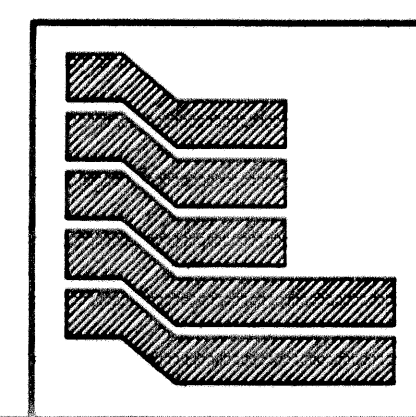
(GRID)
N 88°36'39"W
2709.42'
(GROUND)

PANGOLA
FOUND P.B.C. BRASS
DISK AND C.M.
N= 827159.2580
E= 905154.9570

FOUND 4" X 4" C.M.
SE. CORNER OF SECTION 26
TOWNSHIP 44 S., RANGE 41 E.
PER THE PLAT OF HOMELAND

COORDINATE NOTE:
STATE PLANE COORDINATES SHOWN ARE GRID DATUM, NAD 83 1990
ADJUSTMENT, FLORIDA EAST ZONE, COORDINATE SYSTEM 1983 STATE
PLANE, TRANSVERSE MERCATOR PROJECTION
LINEAR UNIT = US SURVEY FEET
ALL DISTANCES ARE GROUND
SCALE FACTOR = 1.000039
GROUND DISTANCE X SCALE FACTOR = GRID DISTANCE
BEARINGS AS SHOWN HERON ARE GRID DATUM, NAD 83 1990
ADJUSTMENT, FLORIDA EAST ZONE.

HOMELAND
(PLAT BOOK 33, PAGES III-117)



Landmark Surveying & Mapping Inc.
1850 Forest Hill Boulevard
Ph. (561) 433-5405 Suite 100 W.P.B. Florida
LB # 4396

ISLES AT WELLINGTON PLAT VIII
(POD "K")